

Computerized Toilet Manual

I. Safety Notes

- Please read this manual carefully before use in order to ensure correct use of the product.
- To improve the performance of the product, the specification may change without notice.
- To prevent injury to users and other person, please follow the following instructions.

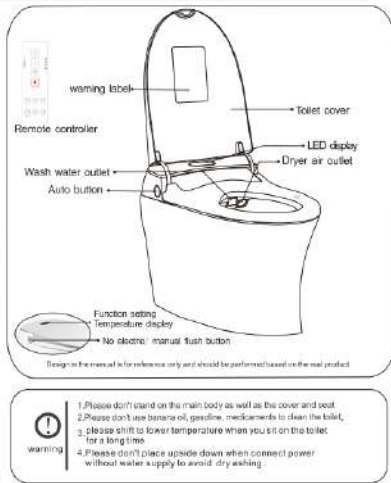
Warning

The represented content is warning you how to avoid injury.

Caution

The represented content is informing you must follow or avoid operation in order to prevent the damage of the equipment or other properties.

Symbols	Warning
	Disassembling repair and alteration are absolutely forbidden without permission, or may cause the fire or electric shock.
	Please do not spray water or cleaning agent on the product or power plug which may lead to electric shock and malfunction.
	Do not use wet hand to touch power plug which may lead electric shock.
	Ensure the water is clean and the water pressure as required.
	<ol style="list-style-type: none"> An use of electric appliance, this product should not be placed at a place with easy access to water splashing or in rather moisture condition. The socket load should be 1300w and up. The battery for the remote control will be 3 pcs 1.5V. If the power cord is damaged, it must be replaced by special cord from manufacturer or our agent.



II Safety caution

Do not use wet hand to plug in, which may lead to electric shock.	Disassemble and disassemble the product on top/bottom.	Do not use benzene oil, gasoline, medicaments to clean the toilet.	Please do not touch the plug if there is abnormal heat or sound.
Please do not spray water or cleaning agent on the product or power plug which may lead to electric shock and malfunction.	Do not use wet hand to touch power plug which may lead electric shock.	Please pay attention to skin temperature. Even if you adjust head back and low temperature is too, the agent particles and the temperature.	Please do not touch the bidet or get hairs offcut.
Ensure the water is clean and the water pressure as required.	Please ensure the plug is with ground.	Please avoid contact with high voltage, low voltage or induction.	Please do not hold the power plug when it is disconnected with power.
An use of electric appliance, this product should not be placed at a place with easy access to water splashing or in rather moisture condition.	Please do not plug in one power cord at the same wall socket (overload).	Please do not place the lid and seat directly.	Please do not lean on the seat cover and operation cover which will lead to the damage of the product.

Computerized Toilet Manual

III Operation Instruction

Note: Please read content below carefully when do not how to use

Note: When first time use, need to match code if remote controller do not work.



Stop/Flush

Press this button or when body left seat it will stop other function and start to flush the toilet automatically. When seat sensor not occupied, it will flush the toilet if press this "flush" button.

Posterior wash / Moving wash

When sit and press this button, the nozzle will clean itself for 2 seconds. Then it begins posterior flushing. The whole flushing lasts for 2 minutes. If you press the button again during flushing, the spray will move forwards and backwards. It will bring you more comfortable flushing experience. Press "water pressure" during flushing can adjust flushing strength. Press "stop" to finish flushing any time if you want.

Dryer temp

Press this button during drying the drying temperature can adjust at 4 levels from

Seat temperature

Press this button to adjust seat temperature according to your preference. There are 4 level to adjust.

Child

Press this button once, will hip wash 15 seconds, move wash 15 seconds and drying 1 minute. Water temp, dryer temp and water pressure are lowest level to protect child. This function still can be active even didn't seat on the sensor.

Auto

Press this button once, will rear wash 30 seconds, move wash 30 seconds and drying 3 minutes, then stop. Or stop automatically when left the seat lid. If press "Front wash" first, then press "Auto", will front wash 30 seconds, move wash 30 seconds and drying 3 minutes, then stop.

Bidet / Moving wash

Same operation as posterior/moving wash button, the only difference is the flushing position. This is designed for female users.

Dryer

Press this button, drying function will be active. Will stop automatically after 5 minutes or leaving the seat. Press "Dryer temp" button to adjust dryer temperature. 5 levels to choose.

Water pressure

This button can adjust flushing strength from strong (red indicator light) medium (pink indicator) to soft (blue indicator).

Nozzle position adjustment

Adjust nozzle position forward or backward according to your preference and convenience during washing. Total 5 position to adjust.

Save electricity

Press this button and the indicator light is on, it will be in intelligent power saving mode which will last 8 hours. When body sensed, it will stop this function automatically. Use this function when you not use the bidet, it will save 40% energy.

Light Eco mode

This button is light on/off function button. If keep press this button for 5 seconds, eco mode will be activated. In eco mode, when seat on the seating lid, eco mode will turn off automatically, and turn on when left the seating lid. (In eco mode, water and seat will stop heating, whole product is in sleep state)

Instructions of other functions

- Intelligent toilet flush method: Flush automatically when people leave. When nobody seat on the toilet, press "STOP FLUSH" button to flush. When there is no electricity, press the side button to flush.



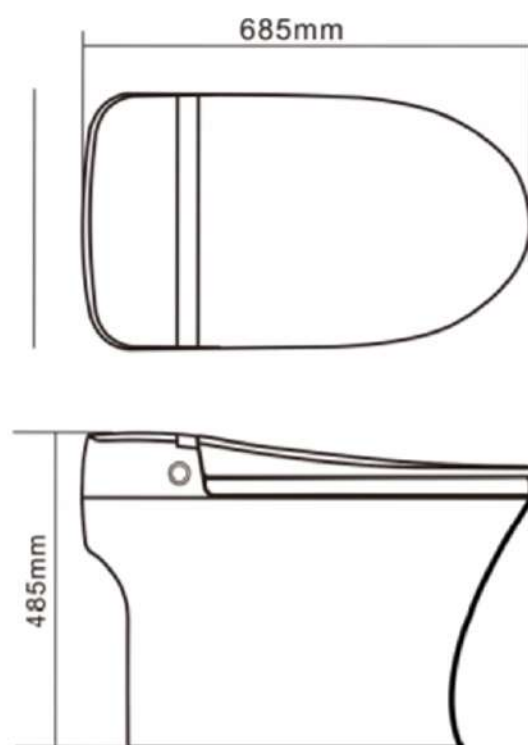
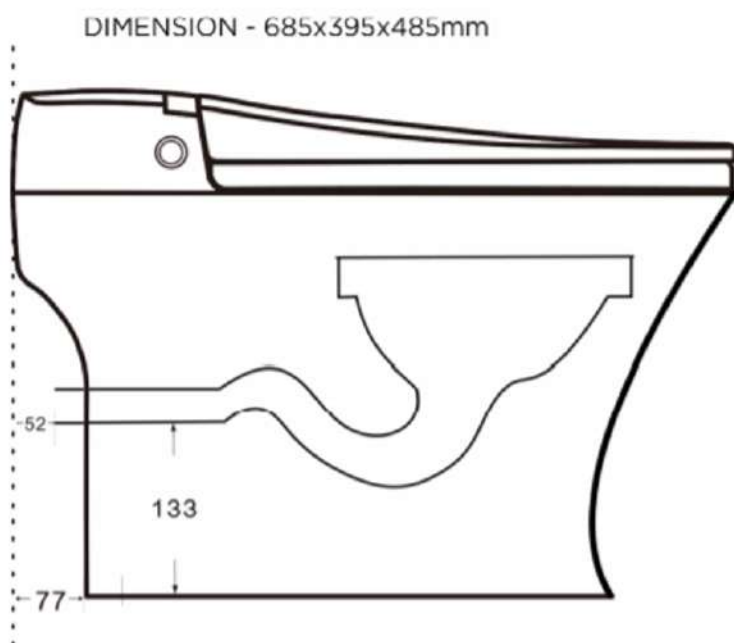
- When seat on the toilet, press any wash button, nozzle will clean itself for 3 seconds, then come out to wash; when left the toilet, nozzle will clean itself again for 3 seconds.



- Automatic deodorization: There is bamboo charcoal deodorant device inside, can dispel the odor automatically.



Salida horizontal(a pared)



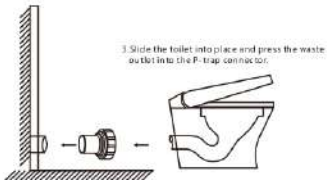
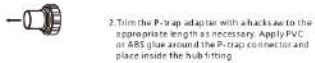
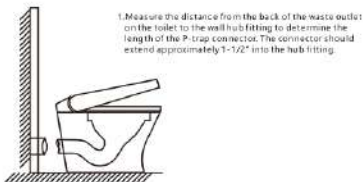
Installation and testing instruction

packing list

- Tools needed :
- Monkey Wrench
 - Phillips screwdriver
 - Glass glue
 - Tap measure
 - Pencil or marker pen
 - Glass glue gun



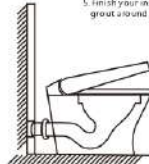
Installation guide



4. Connect the water supply tubes to the toilet. Turn on the water supply and flush the toilet several times to check for any leaks around the back or base.

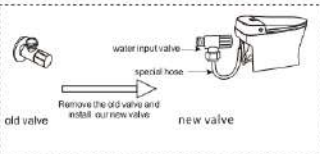


5. Finish your installation by applying latex caulk or tile grout around the base of the toilet.



Water pipe connection and installment

1. Install the new angle valve and connect to the one end of special hose.
2. When power is on, adjust the valve and control the water pressure under 7.5kgs.



Note:
The toilet uses spiral siphon jet flushing technology. If the water pressure is high in your area (over 3kgs water pressure), there may be some splash and noise when flushing. Then please control valve and adjust the water pressure.



Reminder :
It is normal phenomenon that the nozzle flows when open angle valve for the new products and it will be normal after recover power supply.

Please stop power and water supply when dismantling.

Installation and testing instruction

V. Trial operation

1. After finished connection of water supply, open the angle valve and switch on the power. The magnetic valve will flush the toilet and the nozzle come out which is the self-inspection process. The water temperature indicator flashes which means the water tank is getting water and after 40 seconds the indicator stop flash which means finish water input. (It is normal for the nozzle delay the spray for 10-15 seconds for the first time use)

Note: It is normal phenomenon for the nozzle comes out and flows when open the angle valve and get the water supply. After power is on, the nozzle will go back and stop flowing.



Function confirmation

1. Please check each function according to the manual.
2. Switch on the power and put a wet towel or cloth on sensor area. After 1 minutes, the water will be heated as set temperature and the warm air will work when you press the dry key.
3. when there is no power supply, no function can work except the non-electric flush toilet.



Pair remote controller: When seat on the toilet

- Step 1: Keep pressing side button for 5 seconds till heard "BEEP", the LED display will blink at the same time, now the toilet is waiting for pair.
- Step 2: Press any button on the remote controller, will heard "BEEP", and LED display stop blink, pair finished.

The remote controller and toilet were already paired before leave factory, if need to change remote controller, then need to be paired to use.



VI. Maintenance

Main body cleaning

1. Clean with foam rubber or soft dry cloth with mild detergent.
2. Note: Do not use thinner, benzoin, detergent, chemical pesticide, resistant to wax.

filtering mesh cleaning

1. Stop the water supply.
2. Open the T port water input cap.
3. Take out the filtering mesh and clean it with toothbrush.
4. Put it back and recover the water supply.



Nozzle cleaning

1. Please clean the nozzle frequently. Press "front wash or rear wash" button when no body seated so that the nozzle will come out. Then clean it with toothbrush or soft cloth.
2. Please don't cover the nozzle. Press the "stop" button after finished cleaning so that the nozzle will go back automatically.



Not use for long time-Drainage

1. Stop the power supply.
2. Stop the water supply.
3. Lift up the main body.
4. Screw out the drainage screw and drain out water.
5. Put the drainage screw back.



VII. Specification

Power Voltage	220V-240V	SIB-2	3650W
water supply	water input	connect to the water pipe directly	
	water pressure	0.08MPa-0.75MPa (0.8kgf/cm ² -0.75kgf/cm ²)	
warm wash	rear wash water volume	0.5L/min	0.0L/min
	front wash water volume	0.5L/min	0.0L/min
	tank volume	1L	
	temperature	room temp./low 33°C/medium 37°C/high 40°C	
heating power	3000W		Other safety device power cord length 1.5m
safety device	floating switch/temperature fuse/water level sensor		
heated seat	temperature	room temp./low 30°C/medium 35°C/high 40°C	
warm air dryer	heating power	40W	
	safety device	temperature fuse	
	temperature	room temp./low 30°C/medium 30°C/high 40°C	
heating power	2000W		safety device temperature fuse
Other safety device	safety device		
power cord length	1.5m		anti leakage protector
Net weight	46kg		

Confirm the following points before the maintenance application.

phenomenon	inspection method	solution
Fail to run	power failure or forget to switch on	confirm the power is on
The nozzle don't spray or the water do not flow smoothly	water supply failure or water level is off filter mesh is jammed water outlet is jammed by fibrinose	check the water supply and turn on the valve clean the filter mesh clean the nozzle with toothbrush
water leakage	connection parts not tight	make the connection tight
low temperature for water or seat	temperature not set	reset the temperature

Note

1. Please stop the water supply if the power is suddenly off on the process of using. The product will run self-checking system and recover after power on.
2. Please use our special angle valve and other accessories.

BENEFICIOS

- ▶ *Lava con agua tibia de manera suave y eficiente*
- ▶ *Idóneo para pieles sensibles*
- ▶ *Personas con movilidad reducida pueden cuidarse a sí mismos sin depender de otros*
- ▶ *Lavado higiénico presionando un botón*
- ▶ *Las personas de edad pueden cuidarse a si mismas sin depender de asistencia*
- ▶ *Los niños pueden lavarse solos desde pequeños*
- ▶ *Masajea intensamente con agua potente para mejorar el movimiento intestinal*
- ▶ *Mejora la circulación sanguínea y la relajación muscular para dolencias intestinales y anales*
- ▶ *El uso de este tipo de inodoros puede reducir las posibilidades de infección y gérmenes invasores para la mujer embarazada*
- ▶ *Eficiente y convenientemente higiénico durante la menstruación*
- ▶ *No necesita usar papel higiénico, salva más árboles y previene la contaminación*
- ▶ *Evita la posibilidad de infección bacteriana*

DESCRIPCIÓN DE FUNCIONES

- » *Asiento calefactado y temperatura ajustable*
- » *Agua caliente y temperatura ajustable*
- » *Masaje móvil – pulverización en movimiento hacia delante y atrás.*
- » *Secado por aire caliente y ajuste de la temperatura del aire*
- » *Boquilla autolimpiable*
- » *Posición de la boquilla ajustable*
- » *Fuerza del agua de enjuague ajustable*
- » *Presión del agua regulable*
- » *Sensor corporal automático incorporado;*
- » *Termostato instalado*
- » *Tanto la tapa del bidé como el asiento tienen amortiguación (Cierra suave y silenciosamente)*
- » *Desodorización de carbón de bambú para absorber el color*
- » *Modo de ahorro de energía inteligente*
- » *Protecciones múltiples*
- » *Pulverizador femenino*
- » *Pulverizador trasero*
- » *Lavado a presión para ayudar a la defecación*
- » *Función de niños*
- » *Función automática*
- » *Control remoto inteligente*
- » *Boquilla de color plata*
- » *La cisterna no es necesaria - Conectar directamente a las tomas de agua*
- » *Automático / Control remoto / Manual / -3 tipos de descarga*
- » *Función de lavado por pulverización aireado / secado móvil*
- » *No Elevación automática de tapa y asiento*

ESPECIFICACIONES

<i>Voltaje</i>	: AC 110-130V / AC 220-240V . 50Hz/60Hz optional
<i>Suministro de agua</i>	: Conexión directa a la tubería de agua
<i>Presión del agua</i>	: 0.8 kgf/cm ² - 7.5 kgf/cm ² (1 kgf/cm ² ~ 0.1 MPa)
<i>Lavado caliente</i>	: Control de presión de agua ajustable : Control de temperatura : (4 niveles, temperatura ambiente / 33°C / 38°C / 42°C) ajustable : Potencia del calentador de lavado: 1350W : Capacidad del tanque: 1L
<i>Secador por aire caliente</i>	: Potencia - 200W : Control de temperatura (4 niveles, temperatura ambiente / 45°C/ 50°C/ 55°C ajustable)
<i>Calefactor de asiento</i>	: Potencia - 50W : Diseño de tapa de cierre suave : Control de temperatura (4 niveles, temperatura ambiente / 30°C/ 35°C/ 40°C ajustable)
<i>Longitud del cable de alimentación</i>	: 1.5m
<i>Método de limpieza</i>	: Descarga en ciclón y la Succión
<i>Altura desde el suelo (P trap)</i>	: 180mm (Dual)
<i>Peso</i>	: P .Neto 42 kgs P .Bruto 46 kgs
<i>Tamaño</i>	: 685*395*485mm
<i>Embalaje</i>	: Una unidad en cartón interno L745* 480* H545 mm)